

NOTE: NTS = Nevada Test Site, AFB = Air Force Base

Figure 4.2-1
Location of Alluvial Testing Complex

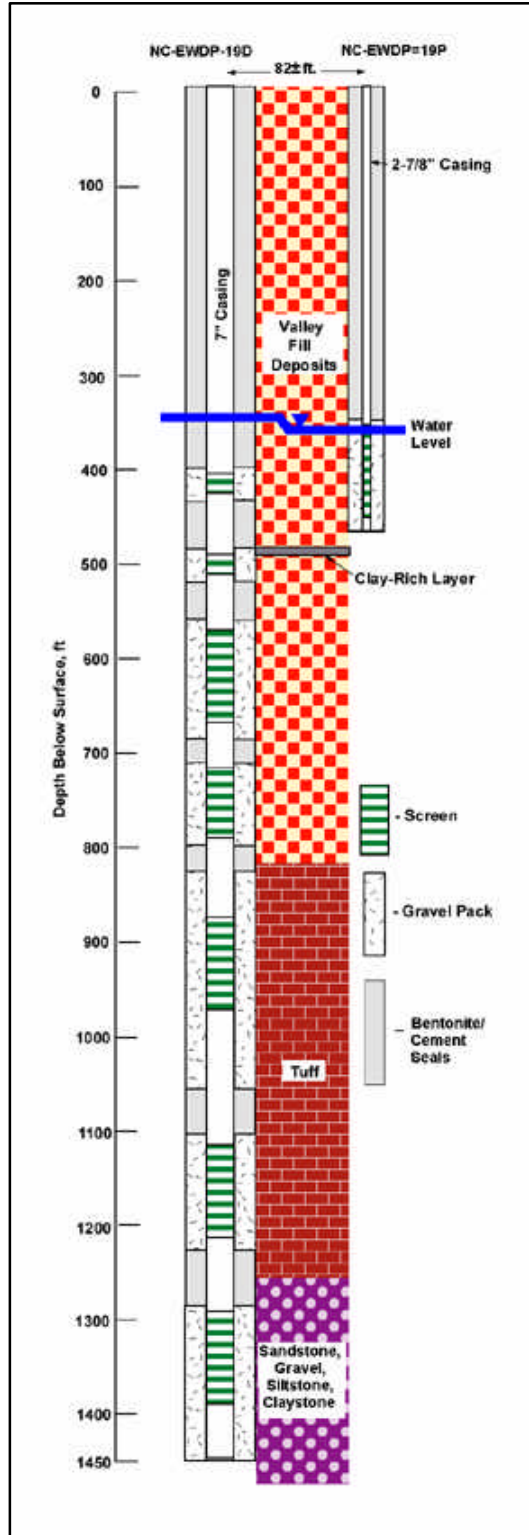
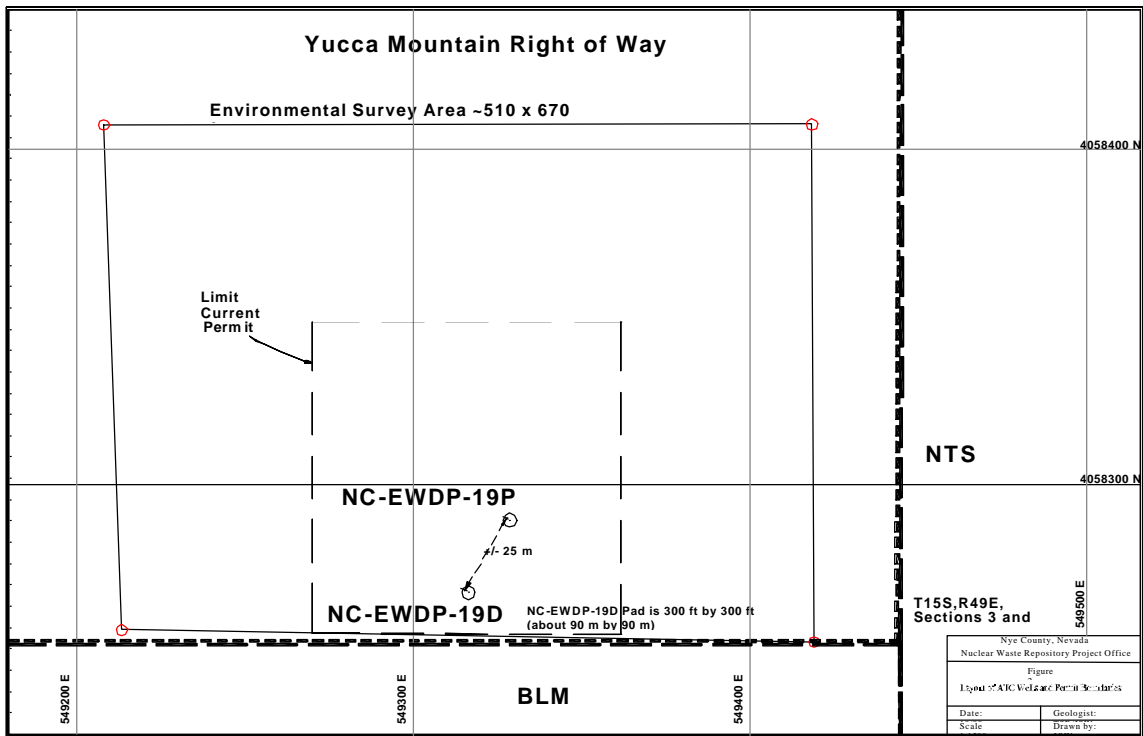


Figure 4.2-2
Wellbore Completion Diagram
for NC-EWDP-19D and -19P



NOTE: BLM = Bureau of Land Management; NTS = Nevada Test Site

Figure 4.2-3
Current Alluvial Testing Complex Configuration with Permit Boundaries

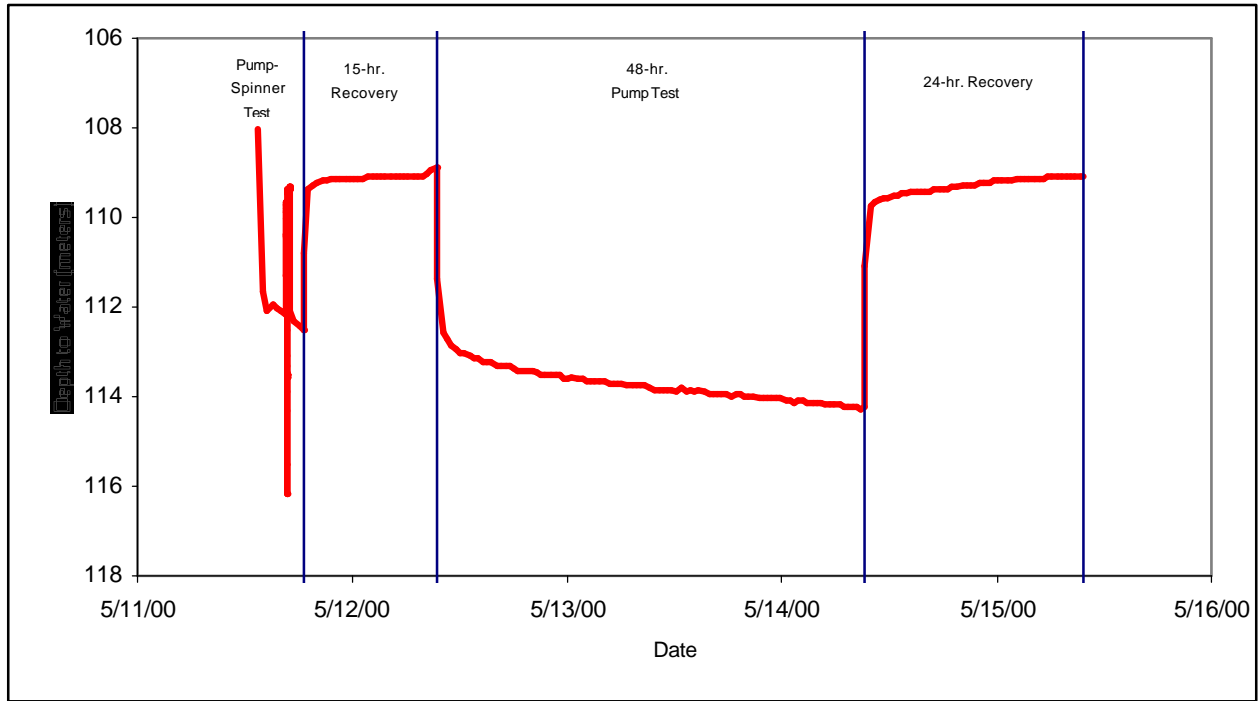


Figure 4.2-4
NC-EWDP-19D Test Response

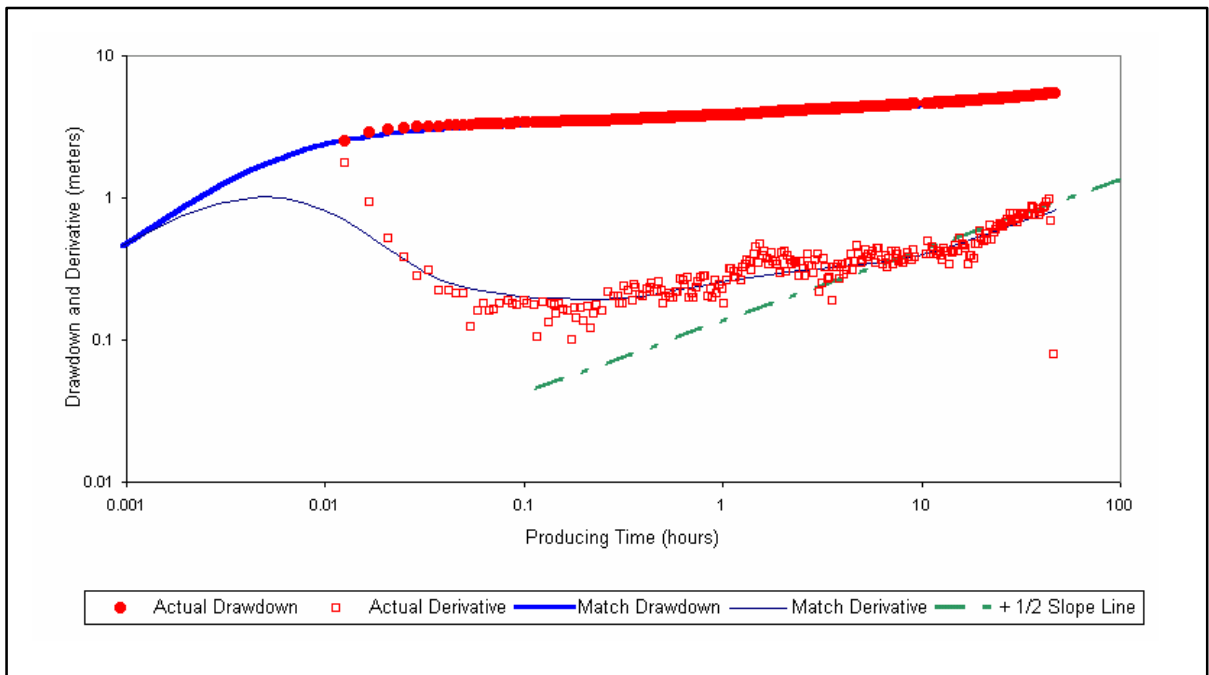
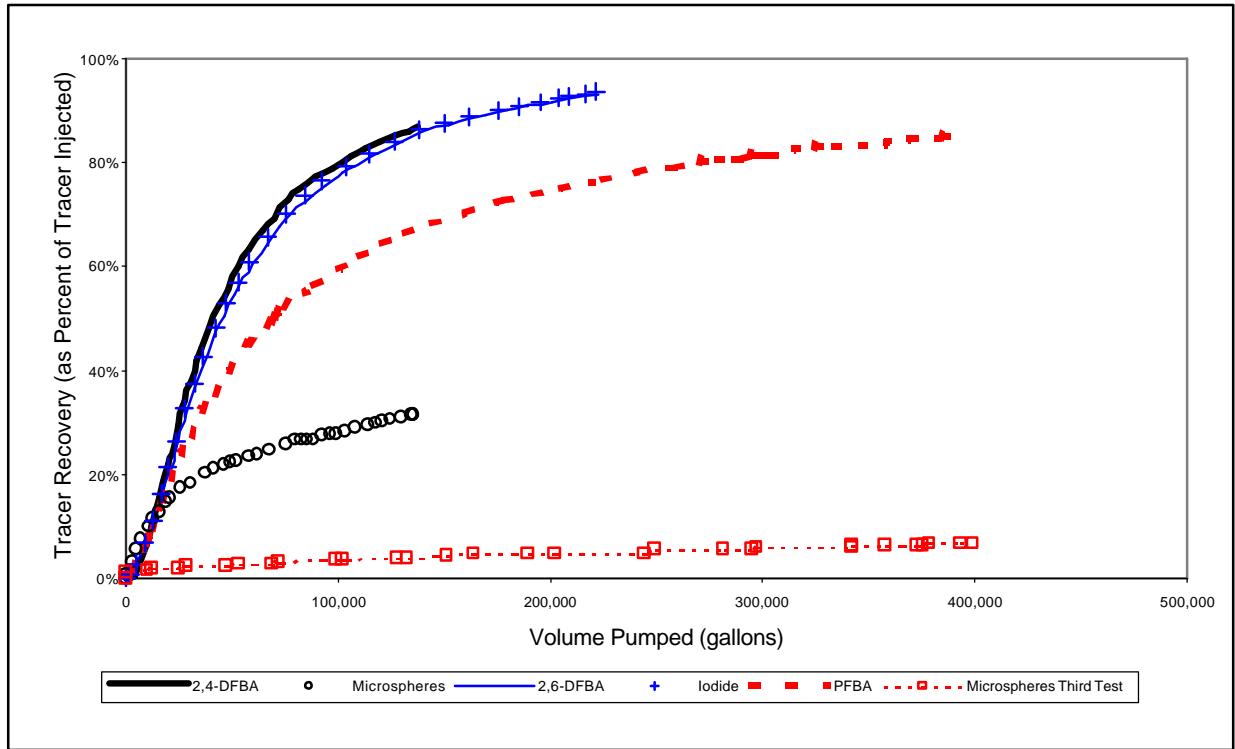
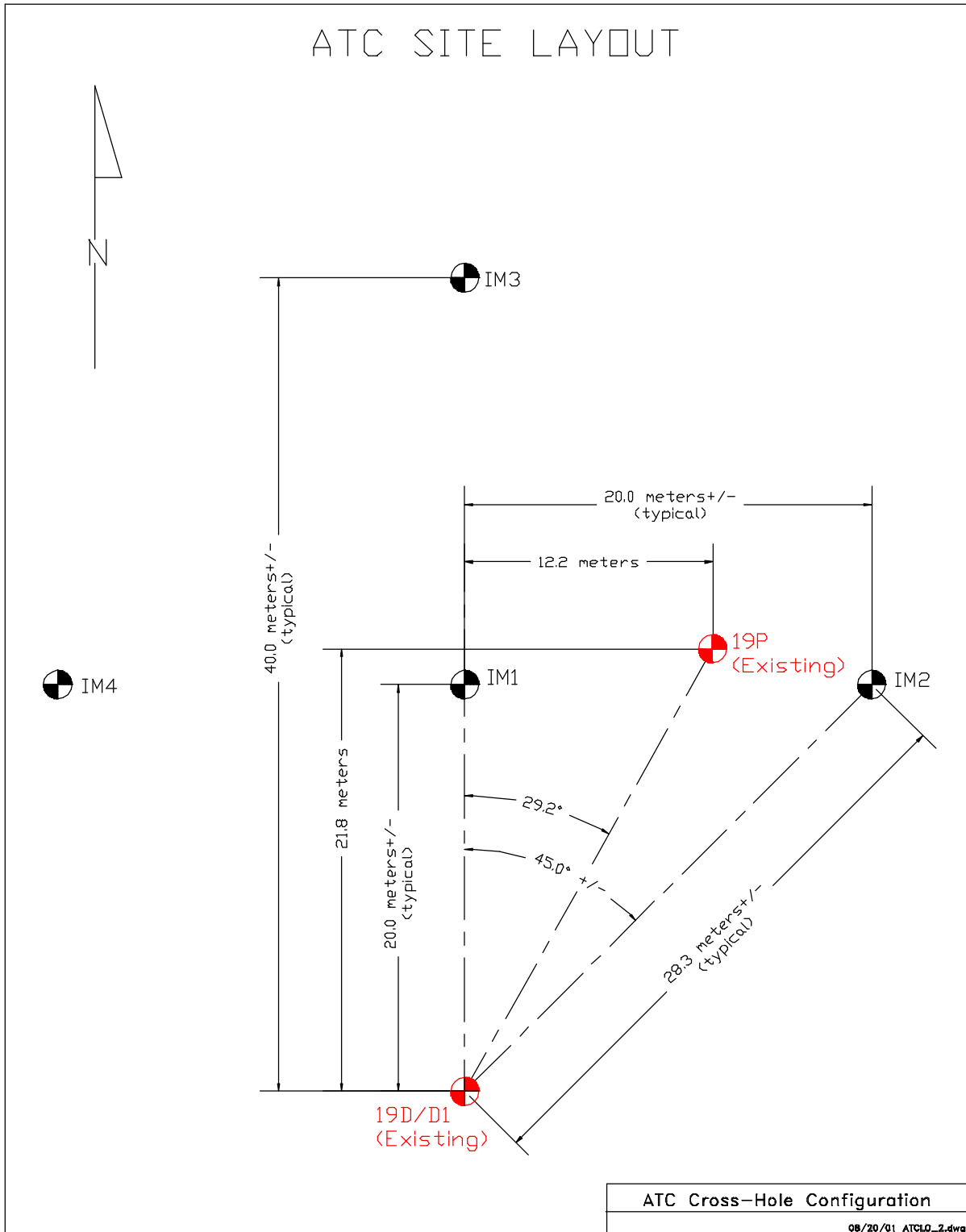


Figure 4.2-5
Log-Log Diagnostic Plot for NC-EWDP-19D Showing $+1/2$ Slope in Derivative at Late Times Characteristic of Parallel Boundaries



NOTE: DFBA = difluorobenzoic acid; PFBA = pentafluorobenzoic acid

Figure 4.2-6
Preliminary Tracer Recovery Curves, Alluvial Testing Complex Single-Well Tracer Tests



NOTES: ATC = Alluvial Testing Complex. The official prefix for the wells shown on this figure is NC-EWDP-.

Figure 4.2-7
Proposed Alluvial Testing Complex Configuration for Cross-Hole Testing