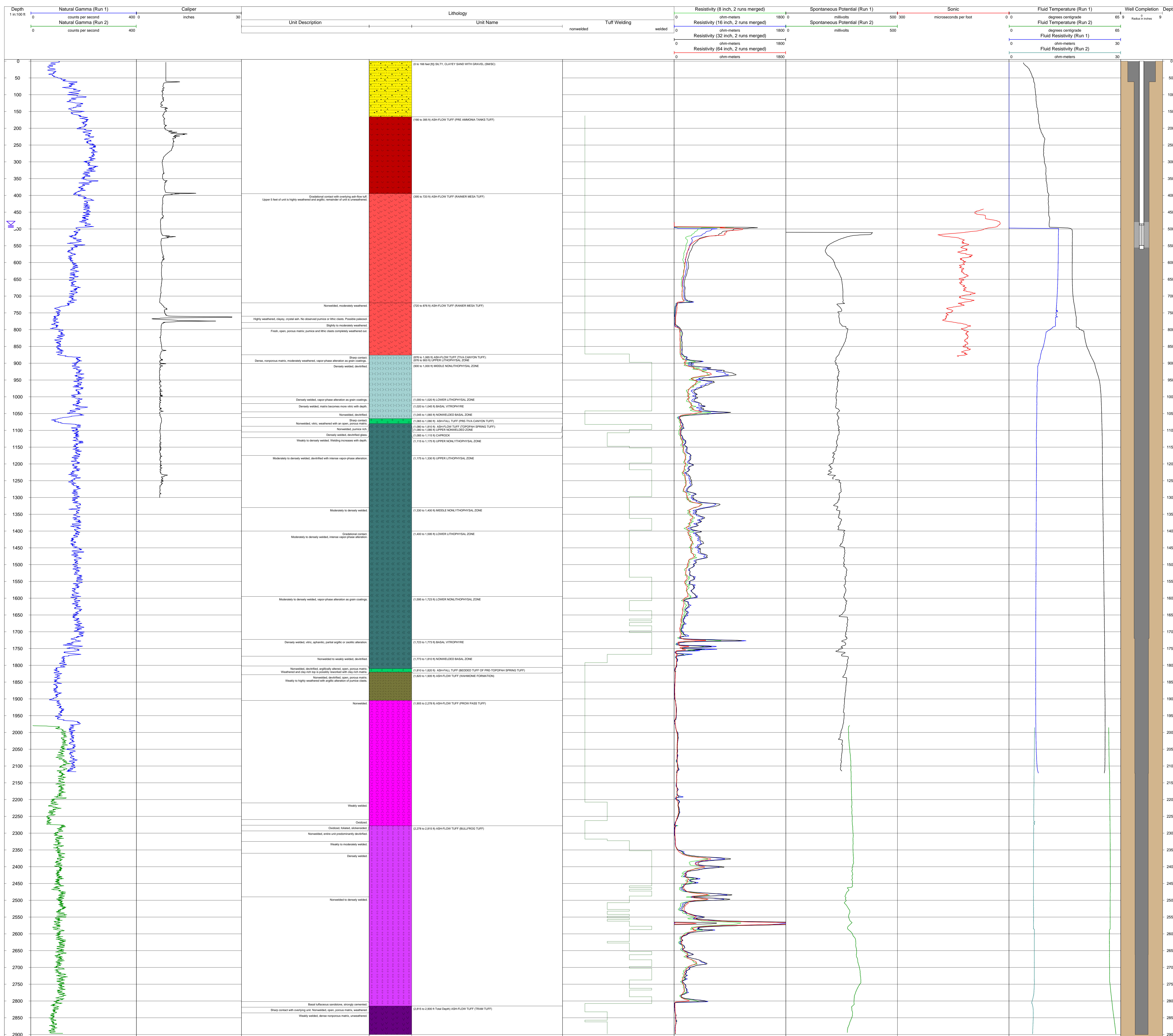


Drafted By: DSD, LAK Checked By: DPH, LAK, DSD Approved By: EHP

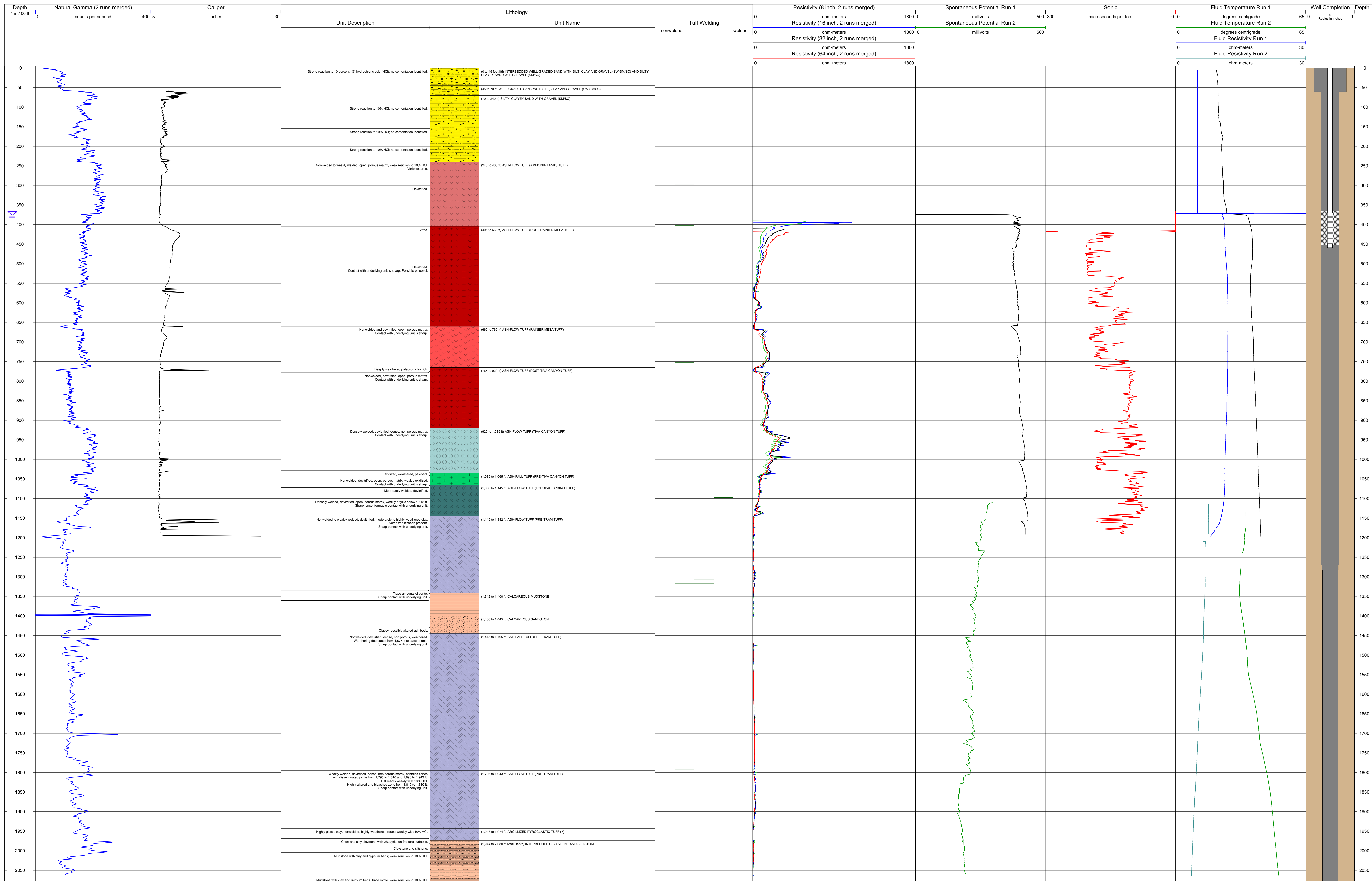
Data Sources: Geophysical logs run by Cerury Geophysical Corporation and Geophysical Logging Services Inc. Some geophysical logs may have been obtained for this report. Refer to Table B.2-1 for details. Geologic logging and interpretations performed by Nye County staff and contract geologists.

August 29, 2005



Drafted By: DSD, LAK Checked By: DPH, LAK, DSD Approved By: EHP

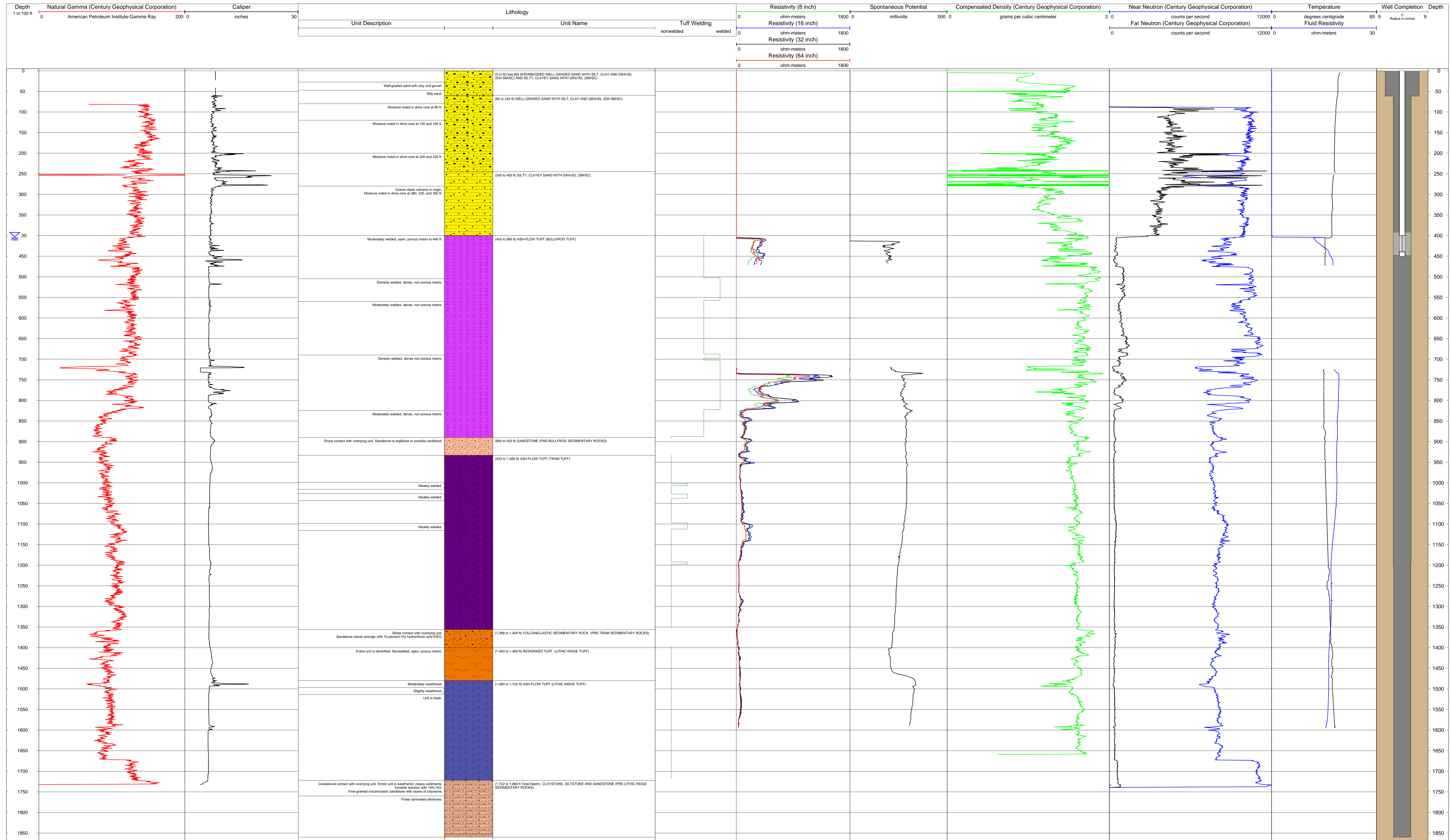
Data Sources: Geophysical logs run by Century Geophysical Corporation and Geophysical Logging Services Inc. Some geophysical logs may have been removed for this report. Refer to Table 2.1 for details. Geologic logging and interpretations performed by New Century staff and contract geologists.



Drafted By DSD, LAK Checked By DPH, LAK, DSD Approved By EHP

Data Sources: Geophysical logs run by Century Geophysical Corporation and Geophysical Logging Services Inc. Some geophysical logs may have been corrected for this report. Refer to Table 5.2-1 for details. Geologic logging and interpretations performed by Nye County staff and contract geologists.

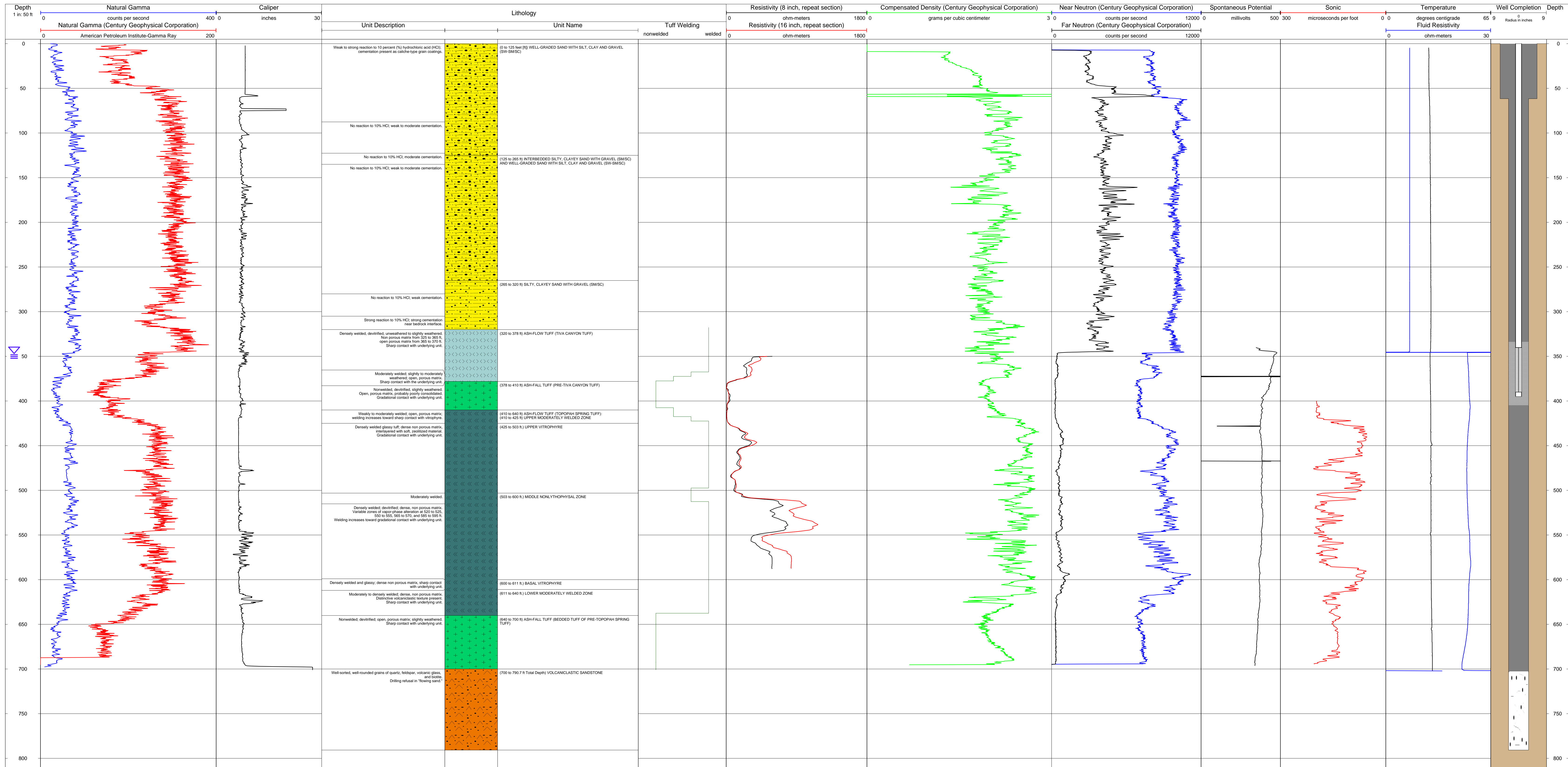
August 29, 2005



Drafted By: DSD, LAK Checked By: DPH, LAK, DSD Approved By: EHP

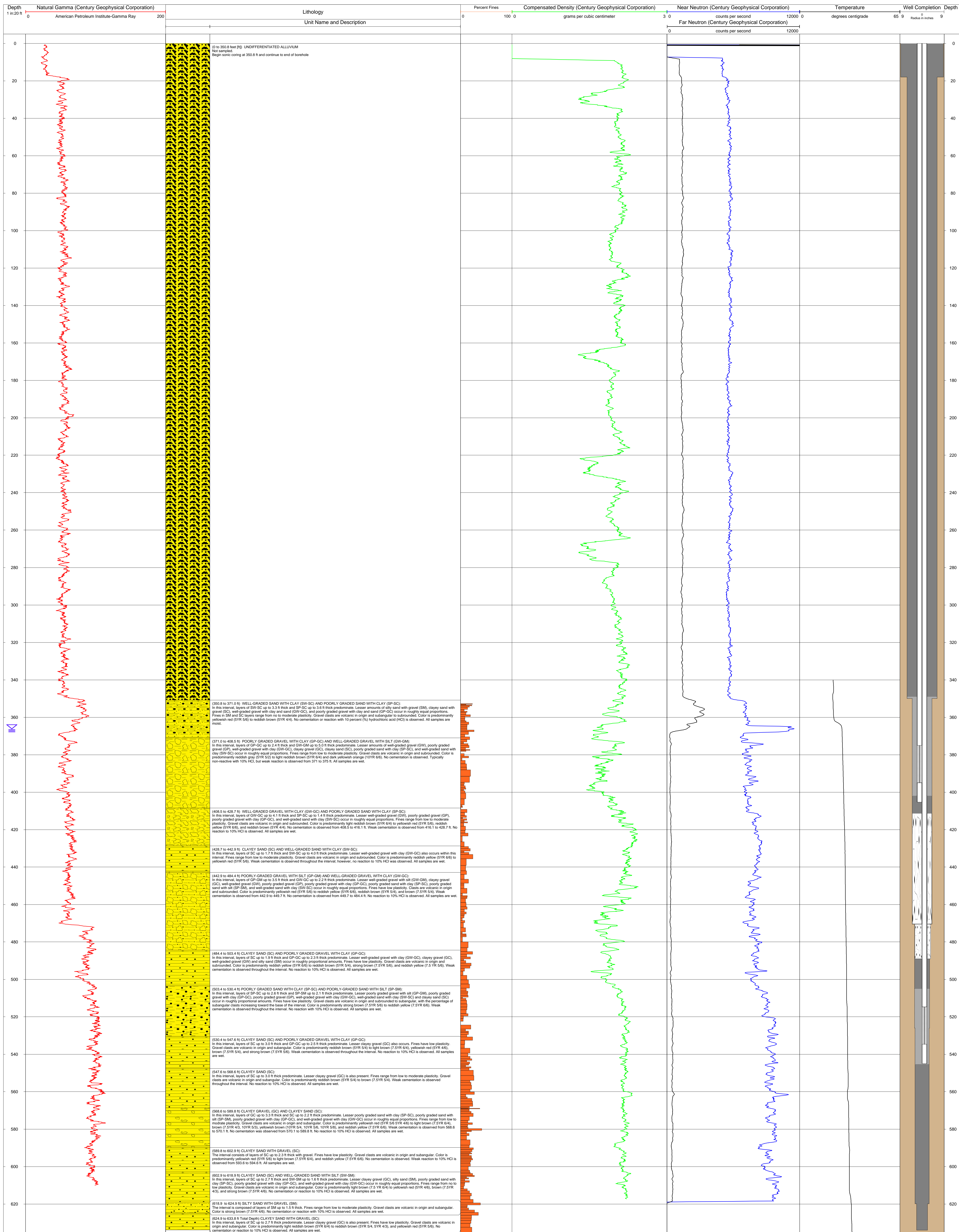
Data Sources: Geophysical logs run by Century Geophysical Corporation and Geophysical Logging Services Inc. Some geophysical logs may have been censored for this report. Refer to Table 6.2.1 for details. Geologic logging and interpretations performed by New County asset and contract geologists.

August 29, 2005



Drafted By: DSD, LAK Checked By: DPH, LAK, DSD Approved By: EHP

Data Sources: Geophysical logs run by Century Geophysical Corporation and Geophysical Logging Services Inc. Some geophysical logs may have been censored for this report. Refer to Table 6.2.1 for details. Geologic logging and interpretations performed by New County east and contract geologists.
 August 29, 2005



Drafted By: DSD, LAK Checked By: DPH, LAK, DSD Approved By: EHP

Source: Geophysical logs run by Century Geophysical Corporation and Geophysical Logging Services Inc. Some geophysical logs may have been corrected for this report. Refer to Table 62-1 for details. Geologic logging and interpretations performed by New County staff and contract geologists.