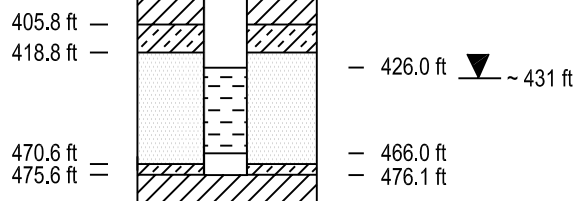
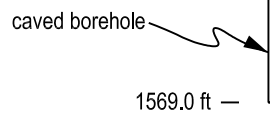


6 1/2 in. Nominal Borehole  
(59.6 ft - 1569.0 ft)



1178.9 ft —  
1189.0 ft —



EXPLANATION	
	Cement Grout
	Granular Bentonite (3/8 in. - dry)
	Bentonite Grout (≥30% solids) and Hydrated Granular Bentonite (3/8 in. and 8 Mesh)
	Sand (8/20 Mesh) / Granular Bentonite (8 Mesh) (~ 2:1 by weight)
	RMC Monterey #3 Sand (8/20 Mesh)
	Caved Borehole
	Well Screen (0.02 in. slots, 7.4 in.²/ft open area)

**Note: Indicated water level is approximate open hole water level with borehole drilled to 1485 ft.**

Nye County, Nevada Nuclear Waste Repository Project Office		
Early Warning Drilling Program Well Completion Diagram NC-EWDP-13P		
Date: 05/07	Geologist: SL	Checked: JSW
Scale: none	Drawn by: KJG	Approved: KJG