

LAND SURFACE ———

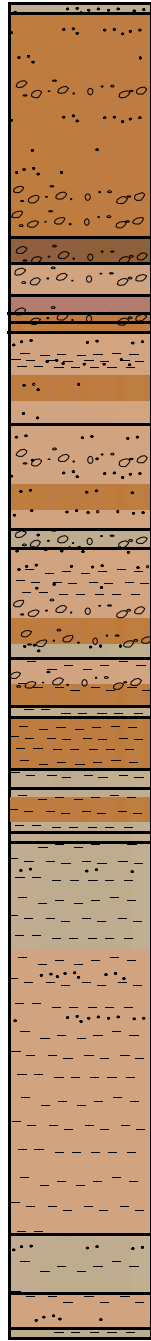
100' ———

200' ———

300' ———

400' ———

T.D. 499.4 ———



- 0'- 5' GRAVELLY SAND: well graded, subrounded gravel, silty, coarse sand, very pale orange (10YR 6/2).
- 5'- 80' SANDY GRAVEL & COBBLES: trace-some silt, fine subrounded gravel, coarse sand, pale yellowish brown (10YR 6/2).
- 80'- 95' GRAVELLY SAND: trace-some silt, fine subrounded gravel, coarse sand, light brown (5YR 6/4-5/6) to moderate brown (5YR 4/4).
- 95'- 110' GRAVELLY SAND: trace silt, fine gravel, medium to coarse sand, light brown (5YR 6/4) to medium brown (5YR 4/4).
- 110'- 120' SANDY GRAVEL: trace-some silt, coarse sand, fine subangular gravel, light brown (5YR 5/6) to pale reddish brown (10R 5/4).
- 120'- 125' GRAVELLY SAND: trace-some silt, fine subangular gravel, coarse sand, light brown (5YR 5/6).
- 125'- 130' CLAYEY SAND & GRAVEL: fine gravel, coarse sand, low plasticity, light brown (5YR 6/4-5/6).
- 130'- 160' SAND: some fine gravel, subrounded, coarse sand, trace-some silt, light brown (5YR 6/4-5/6).
- 160'- 195' SANDY GRAVEL: trace to some silt, medium to coarse sand, fine subrounded gravel, trace clay, light brown (5YR 6/4-5/6).
- 195'- 205' GRAVELLY SAND: trace silt, fine gravel, medium sand, light brown (5YR 5/6) to pale yellowish brown (10YR 6/2).
- 205'- 240' SANDY GRAVEL & COBBLES: trace silt, coarse sand, coarse subrounded gravel, pale yellowish brown (10YR 6/2) to light brown (5YR 6/4-5/6). Clayey from 220' to 240'.
- 240'- 265' CLAYEY GRAVEL: fine sand, some cobbles, coarse subrounded gravel, low-medium plasticity, light brown (5YR 6/4-5/6).
- 265'- 270' CLAYEY SAND: some fine gravel, fine sand, low plasticity, light brown (5YR 6/4).
- 270'- 285' CLAYEY SAND & GRAVEL: fine sand, well graded subrounded gravel, low plasticity, light brown (5YR 6/4).
- 285'- 295' SANDY CLAY: some gravel, fine sand, medium plasticity, light brown (5YR 6/4) to pale yellowish brown (10YR 6/2).
- 295'- 310' CLAYEY & SILTY SAND: some fine gravel, well graded sand, low plasticity, light brown (5YR 6/4) to pale yellowish brown (10YR 6/2).
- 310'- 315' SANDY GRAVEL: silty, trace clay, coarse angular sand, fine gravel, pale yellowish brown (10YR 6/2).
- 315'- 460' SANDY CLAY: some fine gravel, fine to medium sand, medium to high plasticity, pale yellowish brown (10YR 6/2) to light brown (5YR 6/4). Some induration below 350'.
- 460'- 480' CLAYEY SAND: some fine gravel, fine to medium sand, indurated, low to medium plasticity, pale yellowish brown (10YR 6/2).
- 480'- T.D. SANDY CLAY: some fine gravel, fine to medium sand medium plasticity, pale yellow brown (10YR 6/2) to light brown (5YR 6/4).

Nye County, Nevada	
Nuclear Waste Repository Project Office	
Early Warning Drilling Program	
NC-EWDP- 5SB	
Summary Lithologic Log	
Date: 02/00	Geologist: KDD
Not to Scale	Drawn by: WJS