

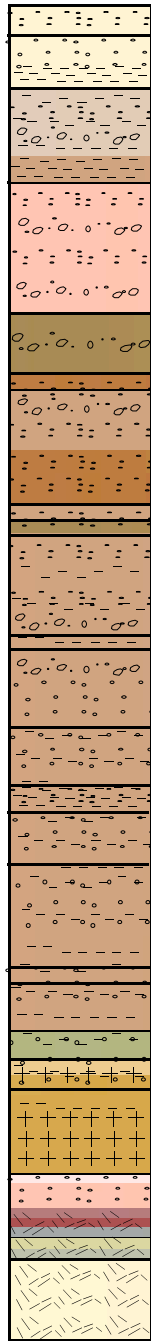
LAND SURFACE

100'

200'

300'

T.D. 389..5



- 0 - 10'** SILTY SAND: minor fine gravel, fine sand, very pale orange (10YR 8/2).
- 10'- 25'** GRAVELLY SILTY SAND: well graded gravel, fine sand, very pale orange (10YR 8/2).
- 25'- 60'** SILTY SAND: minor fine gravel, well graded sand, grayish orange pink (5YR 7/2)-light brown (5YR 6/4).
- 60'- 90'** SILTY SANDY GRAVEL: well graded sand, predominately fine gravels, some caliche, moderate orange pink (10YR 7/4).
- 90'- 110'** GRAVELLY SAND: predominately fine gravel, well graded sand, moderate yellowish brown (10YR 5/4) to very pale orange (10YR 8/2).
- 110'- 115'** SILTY GRAVELLY SAND: coarse gravel, light brown (5YR 5/6).
- 115'- 150'** GRAVELLY SAND: well graded gravel, well graded sand, light brown (5YR 5/6-6/4).
- 150'- 155'** CLAYEY SANDY GRAVEL: subangular-subrounded gravel, high plasticity, light brown (5YR 6/4).
- 155'- 160'** SILTY SAND: minor fine gravel, fine sand, moderate yellowish brown (10YR 5/4).
- 160'- 185'** GRAVELLY CLAYEY SAND: fine gravel. high plasticity, light brown (5YR 6/4).
- 185'- 190'** GRAVELLY SANDY CLAY: fine gravel, high plasticity, light brown (5YR 6/4).
- 190'- 220'** GRAVELLY CLAYEY SAND: fine gravel, coarse sand, low-high plasticity, light brown (5YR 6/4).
- 220'- 235'** SANDY CLAY: minor fine gravel, medium-coarse sand, light brown (5YR 6/4).
- 235'- 245'** SILTY SANDY CLAY: some fine gravel, fine-medium sand, high plasticity, light brown (5YR 6/4).
- 245'- 260'** SANDY CLAY: fine sand, high plasticity, light brown (5YR 6/4).
- 260'- 290'** SANDY CLAY: trace fine gravel, medium-coarse sand, medium-high plasticity, light brown (5YR 6/4).
- 290'- 295'** SANDY CLAY: minor gravel, medium-coarse sand, low plasticity, light brown (5YR 6/4).
- 295'- 310'** GRAVELLY SANDY CLAY: fine to coarse gravel, medium-coarse sand, monolithic moderate orange pink, gravel clasts, light brown (5YR 6/4).
- 310'- 320'** SANDY SILTY CLAY: fine sand, well indurated fragments of siltstone, low-moderate plasticity, pale olive (10Y 6/2).
- 320'- 330'** MUDFLOW TUFF & ASH: conglomeratic, abundant lithics, pumice rich, grayish orange (10YR 7/4) to dark yellowish orange (10YR 6/6), fine angular gravel.
- 330'- 350'** MUDFLOW TUFF: conglomeratic, subrounded cobbles with weathered clayey rind, abundant lithics and pumice, hard.
- 350'- 370'** TUFFACEOUS SANDSTONE: fine grained abundant pumice, grayish orange pink (10R 8/2-7/4)-moderate red (5R 5/4-4/6) to medium light gray (N7).
- 370'- 375'** PYROCLASTIC FLOW: coarse grained, some MnOx. Yellowish gray (5Y 8/1-7/2).
- 375'- T.D.** PYROCLASTIC FLOW: fine grained, biotite and mafics. Botryoidal MnOx on fractures. Very pale orange (10YR 8/2).

|                                         |                |
|-----------------------------------------|----------------|
| Nye County, Nevada                      |                |
| Nuclear Waste Repository Project Office |                |
| Early Warning Drilling Program          |                |
| NC-EWDP- 12PA                           |                |
| Summary Lithologic Log                  |                |
| Date: 04/00                             | Geologist: KDD |
| Not to scale                            | Drawn By: WJS  |