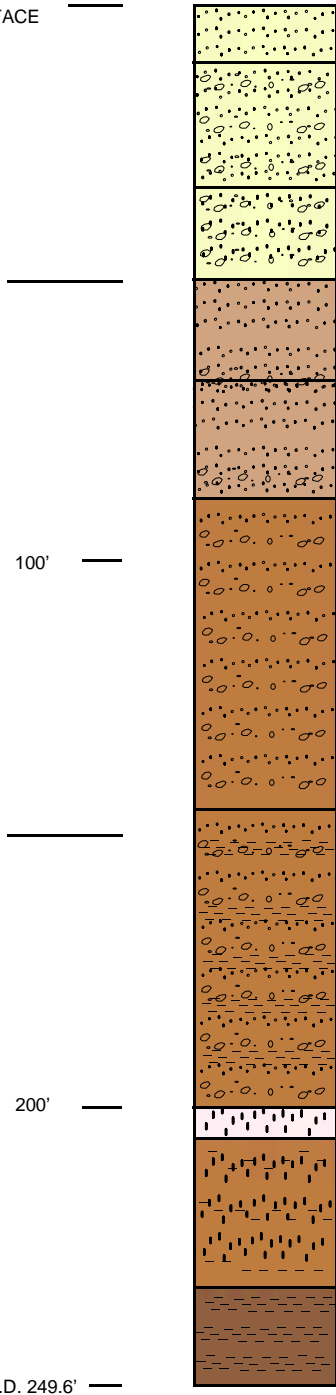


LAND SURFACE



- 0 - 10'** SILTY SAND: some fine gravel, fine sand, calcareous. Very pale orange (10YR 8/2).
- 10'- 30'** GRAVELLY SILTY SAND: predominantly fine gravel, fine sand, very pale orange (10YR 8/2).
- 30'- 50'** SANDY GRAVEL: well graded sand, predominantly fine gravel, some silt, very pale orange (10YR 8/2).
- 50'- 70'** SANDY GRAVEL & GRAVELLY SAND: trace-some silt, predominately fine gravel, some non-calcareous cementation, light brown (5YR 6/4), well graded sand.
- 70'- 90'** SANDY GRAVEL: some silt, well graded sand and gravel, some caliche zones, light brown (5YR 6/4).
- 90'- 145'** GRAVELLY SAND: trace-some silt, predominately fine gravel, well graded sand, light brown (5YR 6/4-5/6). Some caliche from 90'-100'.

some cobbles 120'-125'
clayey below 130'
- 145'- 200'** CLAYEY GRAVELLY SAND: predominately fine gravel, well graded sand, low to medium plasticity, light brown (5YR 5/6) to moderate brown (5YR 4/4).
- 200'- 205'** GRAVEL: fine subangular, multicolored.
- 205'- 230'** CLAYEY SAND & GRAVEL: predominately fine gravel, well graded sand, some coarse gravel and cobbles. low plasticity, light brown (5YR 6/4-5/6).
- 230'- T.D.** SILTY SAND: some very fine sand, medium plasticity, moderate brown (5YR 4/4) mottled with pale yellowish brown (10YR 6/2). Trace MnOx dendrites.

T.D. 249.6'

Nye County, Nevada	
Nuclear Waste Repository Project Office	
Early Warning Drilling Program	
NC-EWDP- 12PC	
Summary Lithologic Log	
Date: 04/00	Geologist: KDD
Not to scale	Drawn By: WJS