

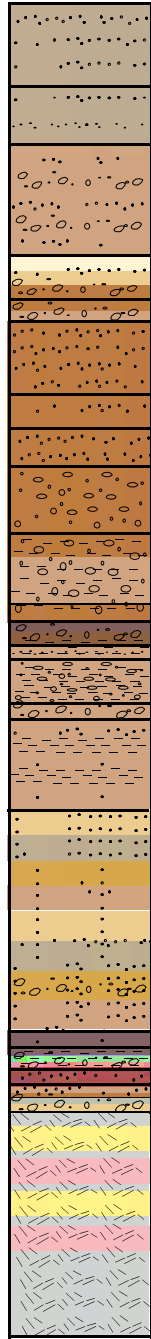
LAND SURFACE _____

100' _____

200' _____

300' _____

T.D. 399.8' _____



- 0 - 25' SILTY SAND: trace fine gravel, fine sand, very pale orange (10YR 8/2) to pale yellowish brown (10YR 6/2).
- 25'- 40' SILTY SAND: trace fine gravel, well graded sand, very pale orange (10YR 8/2).
- 40'- 70' GRAVELLY SAND: predominately fine gravel, well graded sand, some silt, light brown (5YR 6/4).
- 70'- 85' SANDY GRAVEL: well graded sand, predominately fine gravel, caliche cement, very pale orange (10YR 8/2) to grayish orange (10YR 7/4) and light brown (5YR 6/4). Some silt.
- 85'- 95' GRAVELLY SAND: predominately fine gravel well graded sand, some silt, light brown (5YR 6/4-5/6). some caliche.
- 95'- 120' SAND: trace fine gravel, some silt, well graded sand, light brown (5YR 5/6).
- 120'- 130' SILTY SAND: trace fine gravel, well graded sand, light brown (5YR 5/6).
- 130'- 140' SAND: trace fine gravel, some silt, well graded sand, light brown (5YR 5/6).
- 140'- 165' GRAVELLY SAND: predominately fine gravel, some cobbles, trace clay, trace silt, well graded sand, light brown (5YR 6/4-5/6).
- 165'- 180' CLAYEY SAND & GRAVEL: predominately fine gravel, well graded sand, low plasticity, light brown (5YR 6/4-5/6).
- 180'- 185' SANDY & GRAVELLY CLAY: coarse sand, fine gravel, low-medium plasticity. light brown (5YR 5/6).
- 185'- 190' GRAVELLY SAND: fine gravel, coarse sand, grayish red (10R 4/2) to moderate brown (5YR 4/4).
- 190'- 195' CLAYEY SAND & GRAVEL: coarse sand, fine gravel, low plasticity, light brown (5YR 6/4).
- 195'- 210' SANDY & GRAVELLY CLAY: well graded sand, fine gravel, low-high plasticity, light brown (5YR 6/4).
- 210'- 215' GRAVEL: fine angular, multicolored.
- 215'- 240' INTERBEDDED CLAYEY SAND & SANDY CLAY: predominately fine sand, fine angular gravel, low-high plasticity, light brown (5YR 6/4).
- 240'- 315' SILTY SAND: some fine sand, some fine orange tuff gravel below 270', light brown (5YR 6/4) to grayish orange (10YR 7/4) to dark yellowish orange (10YR 6/6). Pale yellowish brown (10YR 6/2) below 245'. Some white non-calcareous veinlets.
- 315'- 320' CLAYEY SAND & GRAVEL: coarse angular sand, fine gravel, gravel consists of grayish red (5R 4/2) welded tuff with flat weathered pumice.
- 320'- 330' TUFFACEOUS SANDSTONE: fine grained, moderately hard, fine biotite, crystal rich, volcanoclastic, some "lichen" MnOx. light red (5R 6/6-4/6) in contact with light brownish gray (5YR 6/1).
- 330'- 335' CONGLOMERATE: cobbles and gravel in a sandy clay matrix, abundant lithics. light brown (5YR 6/4-5/6) (mud flow?)
- 335'- 340' CONGLOMERATE: predomenatly fine gravel, abundant lithics, grayish brown (5YR 3/2) to dark yellowish orange (10YR 6/6).
- 340'- 345' TUFFACEOUS SANDSTONE (ASH): very fine, some fine MnOx, yellowish gray (5Y 8/1) to grayish orange (10YR 7/4).
- 345'- T.D. PYROCLASTIC FLOW: coarse grained, porphyritic, crystal-rich, some mafics. White (N9) to moderate pink (5R 7/4) to pale yellowish orange (10YR 8/6).

Nye County, Nevada	
Nuclear Waste Repository Project Office	
Early Warning Drilling Program	
NC-EWDP- 12PB	
Summary Lithologic Log	
Date: 03/00	Geologist: KDD
Not to scale	Drawn By: WJS