

for surface completion detail see Wellhead Protection Diagram

Ground Level

14 1/2 in. Nominal Borehole (0.0 ft - 22.3 ft)

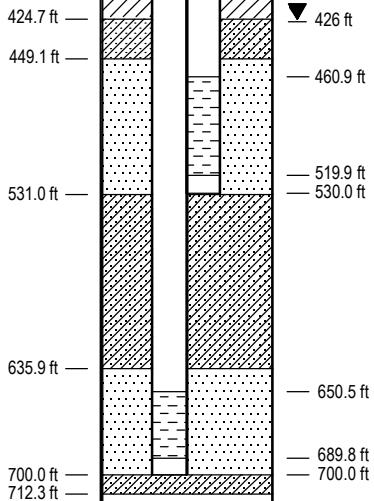
22.3 ft

10 3/4 in. OD Protective Steel Casing (0 ft - 16.9 ft)

16.9 ft

2 in. Sch. 80 PVC Well Casing

8 1/2 in. Nominal Borehole (22.3 ft - 1339.9 ft)



Caved Borehole (712.0 ft - 1339.9 ft)

1339.9 ft

EXPLANATION	
	Bentonite Grout (≥30% solids)
	Silica Sand (8/12 Mesh) / Granular Bentonite (8Mesh) (~ 3:1 by weight)
	Well Screen Sand (8/12 Mesh)
	Screened Well Casing; 0.02 in. slots, 7.1 in. /ft open area
	Caved Material

Note: Indicated water level is approximate open hole water level at end of drilling.

Nye County, Nevada Nuclear Waste Repository Project Office	
Early Warning Drilling Program Well Completion Diagram NC-EWDP-23P	
Date: 9/20/02	Geologist: BW
Scale: none	Drawn by: KJG